

LOCHS T5 SVSV



Animal ID LCH22T5
NLIS Visual No/RFID - / 964 001037292288
Date of Birth 01/09/2022
Inventory Season n/a
Sex Male
Register Angus Performance Register
Mating Type AI
Colour Black
Birth Number Single
Status Active
DNA Profile Stored SNP
Parentage Verification Sire verified
Genetic Conditions AM6%,CA6%,DD6%,NH6%

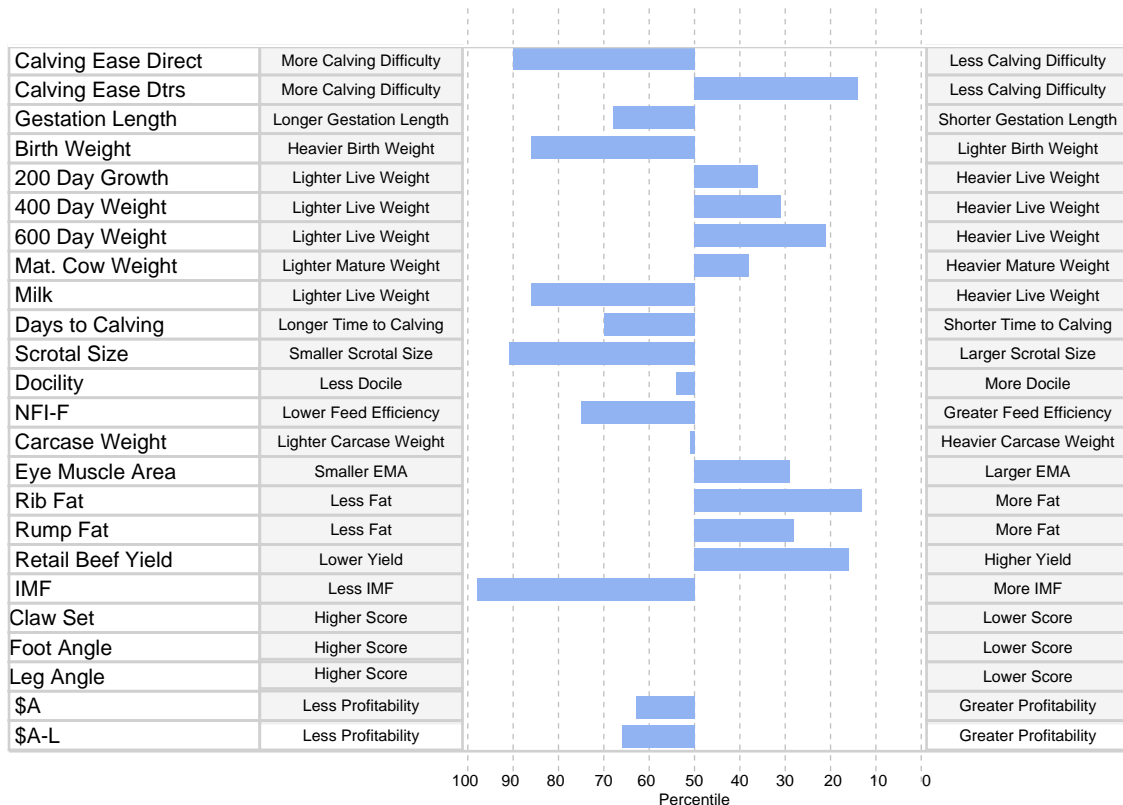
USA16207085 BENFIELD SUBSTANCE 8506#
 USA17292558 MOHNEN SUBSTANTIAL 272#
 USA16396059 MOHNEN GLYN MAWR ELBA 1758#
Sire: USA18397542 SITZ STELLAR 726D^{PV}
 USA15848422 CONNEALY FINAL PRODUCT^{PV}
 USA17776820 SITZ PRIDE 200B#
 USA17050218 SITZ PRIDE 308Y#

Dam: UNKNOWN

Mid May 2024 TransTasman Angus Cattle Evaluation												
TACE <small>TransTasman Angus Cattle Evaluation</small>	Calving Ease				Growth					Fertility		Temp
	Calving Ease Dir	Calving Ease Dtrs	Gest. Length	Birth Wt	200 Day Growth	400 Day Weight	600 Day Weight	Mat. Cow Weight	Milk	Days to Calving	Scrotal Size	Docility
EBV	-4.4	+6.7	-3.3	+5.9	+54	+99	+134	+109	+12	-3.8	+0.7	+19
Acc	63%	49%	80%	80%	81%	79%	79%	75%	69%	36%	76%	73%
Perc	90	14	68	86	36	31	21	38	86	70	91	54
	Carcase					Feed Efficiency		Structural		Selection Index		
	Carcase Weight	EMA	Rib Fat	Rump Fat	RBV	IMF	NFI-F	Claw Set	Foot Angle	Leg Angle	\$A	\$A-L
EBV	+67	+8.1	+1.9	+0.9	+1.1	-0.4	+0.46	-	-	-	\$192	\$329
Acc	66%	66%	66%	66%	57%	71%	55%	-	-	-	-	-
Perc	51	29	13	28	16	98	75	-	-	-	63	66

Traits Observed: Genomics

Statistics: Number of Herds: 0 Prog Analysed: 0



© 2024 Angus Australia

Important Notice

The information contained in this animal listing has been compiled from databases owned by Angus Australia and has been designed, created and published by Angus Australia. The information is owned by Angus Australia and has been published for information purposes only. No section or individual item may be reproduced or used by any person or other legal entity for any commercial purpose whatsoever, without the prior express consent of Angus Australia.

LOCHS T13^{SVSV}



Animal ID LCH22T13
NLIS Visual No/RFID - / 982 123806414610
Date of Birth 01/09/2022
Inventory Season n/a
Sex Male
Register Angus Performance Register
Mating Type AI
Colour Black
Birth Number Single
Status Active
DNA Profile Stored SNP
Parentage Verification Sire verified
Genetic Conditions AM6%,CA6%,DD6%,NH6%

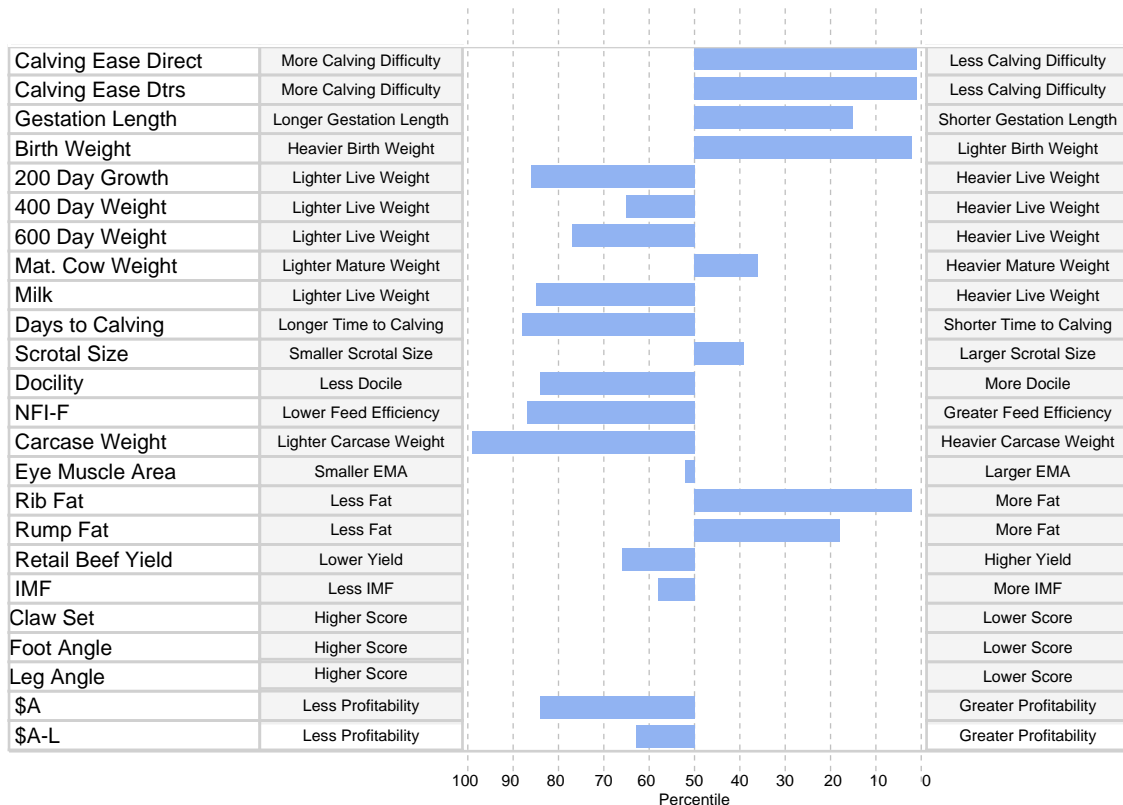
USA16207085 BENFIELD SUBSTANCE 8506#
 USA17292558 MOHNEN SUBSTANTIAL 272#
 USA16396059 MOHNEN GLYN MAWR ELBA 1758#
Sire: USA18397542 SITZ STELLAR 726D^{PV}
 USA15848422 CONNEALY FINAL PRODUCT^{PV}
 USA17776820 SITZ PRIDE 200B#
 USA17050218 SITZ PRIDE 308Y#

Dam: UNKNOWN

Mid May 2024 TransTasman Angus Cattle Evaluation												
TACE <small>TransTasman Angus Cattle Evaluation</small>	Calving Ease				Growth					Fertility		Temp
	Calving Ease Dir	Calving Ease Dtrs	Gest. Length	Birth Wt	200 Day Growth	400 Day Weight	600 Day Weight	Mat. Cow Weight	Milk	Days to Calving	Scrotal Size	Docility
EBV	+10.8	+10.4	-7.0	-0.3	+42	+87	+106	+111	+12	-2.7	+2.4	+12
Acc	64%	50%	81%	80%	81%	79%	80%	76%	70%	36%	77%	74%
Perc	1	1	15	2	86	65	77	36	85	88	39	84
	Carcase						Feed Efficiency		Structural		Selection Index	
	Carcase Weight	EMA	Rib Fat	Rump Fat	RBV	IMF	NFI-F	Claw Set	Foot Angle	Leg Angle	\$A	\$A-L
EBV	+29	+6.1	+4.0	+1.7	+0.2	+1.9	+0.62	-	-	-	\$166	\$334
Acc	67%	67%	67%	67%	58%	71%	56%	-	-	-	-	-
Perc	99	52	2	18	66	58	87	-	-	-	84	63

Traits Observed: Genomics

Statistics: Number of Herds: 0 Prog Analysed: 0



© 2024 Angus Australia

Important Notice

The information contained in this animal listing has been compiled from databases owned by Angus Australia and has been designed, created and published by Angus Australia. The information is owned by Angus Australia and has been published for information purposes only. No section or individual item may be reproduced or used by any person or other legal entity for any commercial purpose whatsoever, without the prior express consent of Angus Australia.

LOCHS T22 SVSV



Animal ID LCH22T22
NLIS Visual No/RFID - / 982 123806414622
Date of Birth 01/09/2022
Inventory Season n/a
Sex Male
Register Angus Performance Register
Mating Type AI
Colour Black
Birth Number Single
Status Active
DNA Profile Stored SNP
Parentage Verification Sire verified
Genetic Conditions AM6%,CA6%,DD6%,NH6%

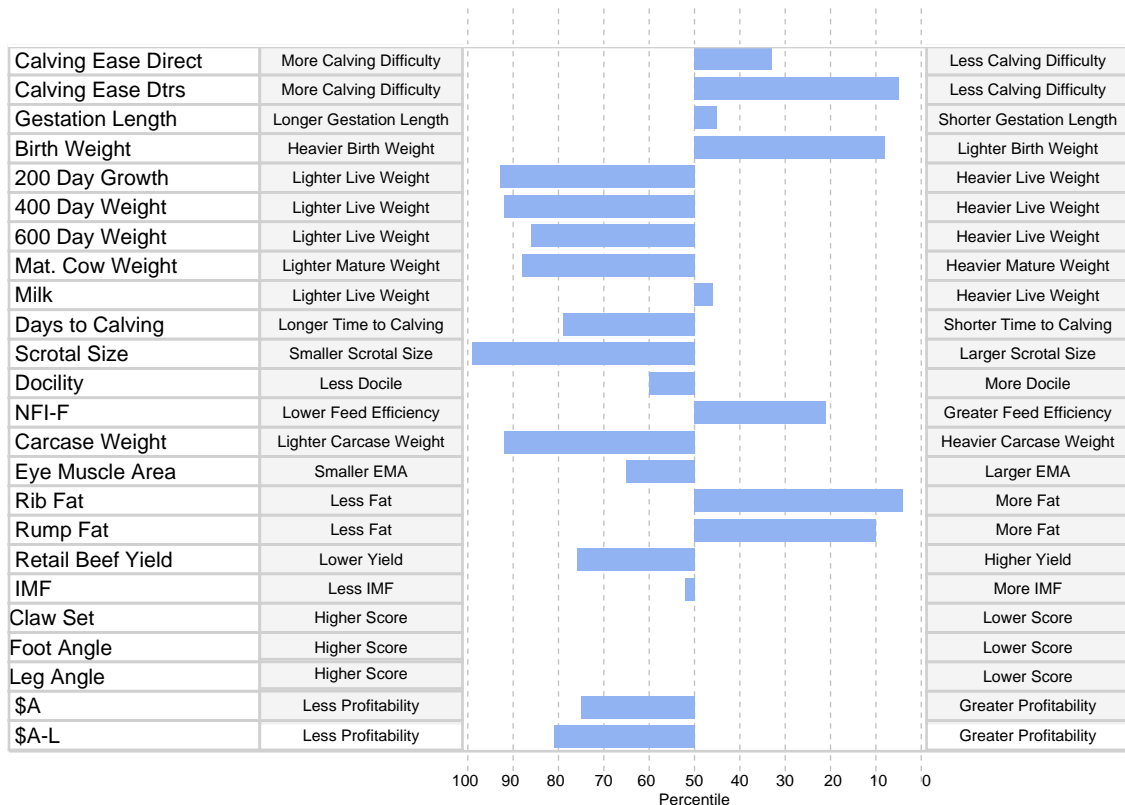
USA16207085 BENFIELD SUBSTANCE 8506#
 USA17292558 MOHNEN SUBSTANTIAL 272#
 USA16396059 MOHNEN GLYN MAWR ELBA 1758#
Sire: USA18397542 SITZ STELLAR 726D^{PV}
 USA15848422 CONNEALY FINAL PRODUCT^{PV}
 USA17776820 SITZ PRIDE 200B#
 USA17050218 SITZ PRIDE 308Y#

Dam: UNKNOWN

Mid May 2024 TransTasman Angus Cattle Evaluation												
TACE	Calving Ease				Growth					Fertility		Temp
	Calving Ease Dir	Calving Ease Dtrs	Gest. Length	Birth Wt	200 Day Growth	400 Day Weight	600 Day Weight	Mat. Cow Weight	Milk	Days to Calving	Scrotal Size	Docility
EBV	+4.1	+8.5	-4.7	+1.5	+39	+74	+100	+73	+17	-3.3	-1.0	+18
Acc	62%	48%	80%	79%	80%	78%	79%	74%	69%	34%	76%	72%
Perc	33	5	45	8	93	92	86	88	46	79	99	60
	Carcase					Feed Efficiency		Structural		Selection Index		
	Carcase Weight	EMA	Rib Fat	Rump Fat	RBV	IMF	NFI-F	Claw Set	Foot Angle	Leg Angle	\$A	\$A-L
EBV	+49	+5.1	+3.2	+2.6	+0.0	+2.1	-0.06	-	-	-	\$179	\$302
Acc	65%	65%	65%	65%	56%	70%	54%	-	-	-	-	-
Perc	92	65	4	10	76	52	21	-	-	-	75	81

Traits Observed: Genomics

Statistics: Number of Herds: 0 Prog Analysed: 0



© 2024 Angus Australia

Important Notice

The information contained in this animal listing has been compiled from databases owned by Angus Australia and has been designed, created and published by Angus Australia. The information is owned by Angus Australia and has been published for information purposes only. No section or individual item may be reproduced or used by any person or other legal entity for any commercial purpose whatsoever, without the prior express consent of Angus Australia.

LOCHS T25 SVSV



Animal ID LCH22T25
NLIS Visual No/RFID - / 982 123806414609
Date of Birth 01/09/2022
Inventory Season n/a
Sex Male
Register Angus Performance Register
Mating Type AI
Colour Black
Birth Number Single
Status Active
DNA Profile Stored SNP
Parentage Verification Sire verified
Genetic Conditions AM6%,CA6%,DD6%,NH6%

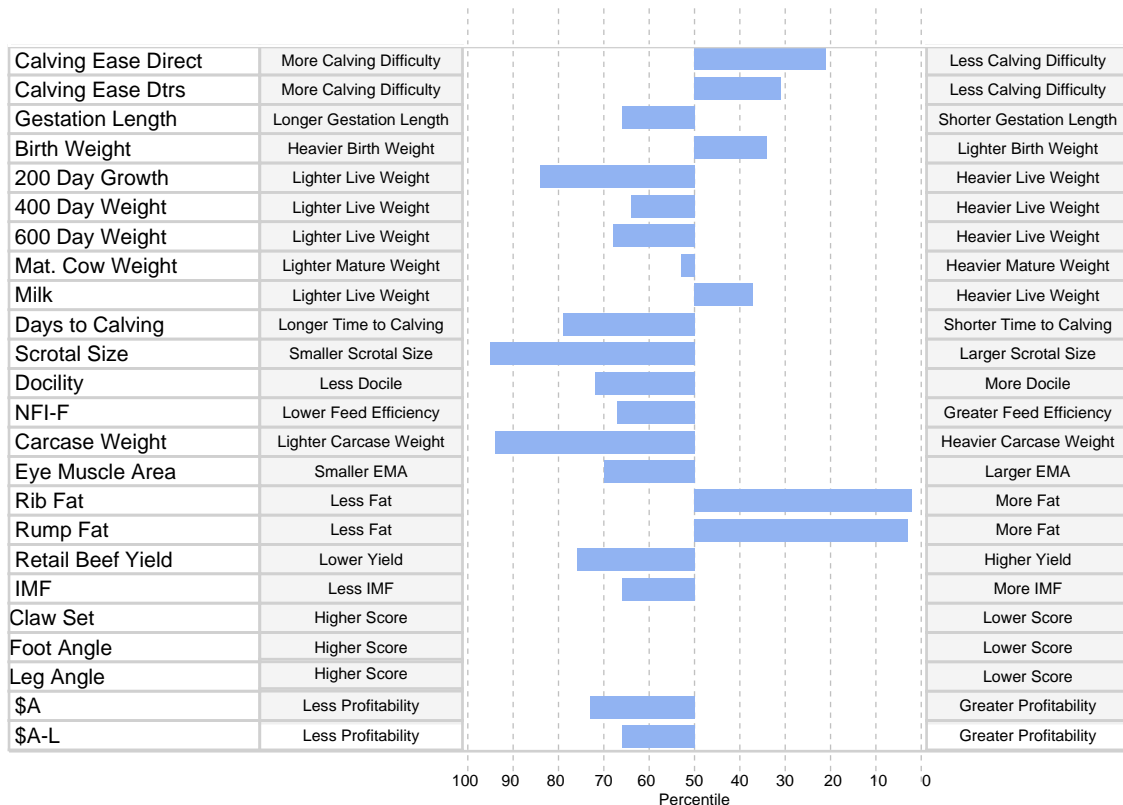
USA16207085 BENFIELD SUBSTANCE 8506#
 USA17292558 MOHNEN SUBSTANTIAL 272#
 USA16396059 MOHNEN GLYN MAWR ELBA 1758#
Sire: USA18397542 SITZ STELLAR 726D^{PV}
 USA15848422 CONNEALY FINAL PRODUCT^{PV}
 USA17776820 SITZ PRIDE 200B#
 USA17050218 SITZ PRIDE 308Y#

Dam: UNKNOWN

Mid May 2024 TransTasman Angus Cattle Evaluation												
TACE <small>TransTasman Angus Cattle Evaluation</small>	Calving Ease				Growth					Fertility		Temp
	Calving Ease Dir	Calving Ease Dtrs	Gest. Length	Birth Wt	200 Day Growth	400 Day Weight	600 Day Weight	Mat. Cow Weight	Milk	Days to Calving	Scrotal Size	Docility
EBV	+5.5	+4.9	-3.4	+3.3	+43	+87	+111	+100	+19	-3.3	+0.4	+15
Acc	64%	49%	80%	79%	80%	78%	79%	75%	69%	36%	76%	72%
Perc	21	31	66	34	84	64	68	53	37	79	95	72
	Carcase					Feed Efficiency		Structural		Selection Index		
	Carcase Weight	EMA	Rib Fat	Rump Fat	RBV	IMF	NFI-F	Claw Set	Foot Angle	Leg Angle	\$A	\$A-L
EBV	+46	+4.7	+4.1	+4.2	+0.0	+1.6	+0.37	-	-	-	\$181	\$329
Acc	66%	66%	66%	66%	57%	70%	55%	-	-	-	-	-
Perc	94	70	2	3	76	66	67	-	-	-	73	66

Traits Observed: Genomics

Statistics: Number of Herds: 0 Prog Analysed: 0



© 2024 Angus Australia

Important Notice

The information contained in this animal listing has been compiled from databases owned by Angus Australia and has been designed, created and published by Angus Australia. The information is owned by Angus Australia and has been published for information purposes only. No section or individual item may be reproduced or used by any person or other legal entity for any commercial purpose whatsoever, without the prior express consent of Angus Australia.

LOCHS T33 SVSV



Animal ID LCH22T33
NLIS Visual No/RFID - / 982 123806414618
Date of Birth 01/09/2022
Inventory Season n/a
Sex Male
Register Angus Performance Register
Mating Type AI
Colour Black
Birth Number Single
Status Active
DNA Profile Stored SNP
Parentage Verification Sire verified
Genetic Conditions AM6%,CA6%,DD6%,NH6%

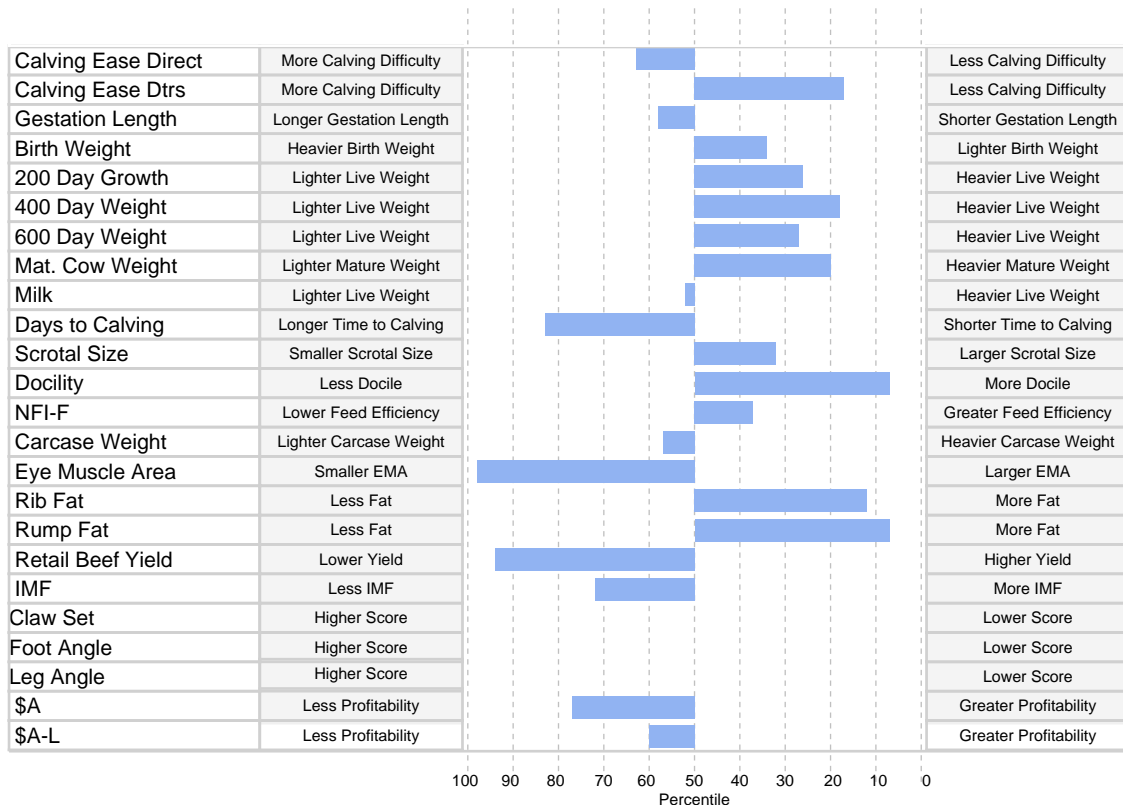
USA16207085 BENFIELD SUBSTANCE 8506#
 USA17292558 MOHNEN SUBSTANTIAL 272#
 USA16396059 MOHNEN GLYN MAWR ELBA 1758#
Sire: USA18397542 SITZ STELLAR 726D^{PV}
 USA15848422 CONNEALY FINAL PRODUCT^{PV}
 USA17776820 SITZ PRIDE 200B#
 USA17050218 SITZ PRIDE 308Y#

Dam: UNKNOWN

Mid May 2024 TransTasman Angus Cattle Evaluation												
TACE	Calving Ease				Growth					Fertility		Temp
	Calving Ease Dir	Calving Ease Dtrs	Gest. Length	Birth Wt	200 Day Growth	400 Day Weight	600 Day Weight	Mat. Cow Weight	Milk	Days to Calving	Scrotal Size	Docility
EBV	+0.8	+6.3	-3.9	+3.3	+56	+104	+130	+123	+17	-3.1	+2.6	+35
Acc	64%	50%	81%	80%	81%	79%	80%	76%	70%	36%	77%	74%
Perc	63	17	58	34	26	18	27	20	52	83	32	7
	Carcase					Feed Efficiency		Structural		Selection Index		
	Carcase Weight	EMA	Rib Fat	Rump Fat	RBV	IMF	NFI-F	Claw Set	Foot Angle	Leg Angle	\$A	\$A-L
EBV	+65	-0.3	+2.0	+3.1	-0.6	+1.4	+0.10	-	-	-	\$176	\$338
Acc	67%	67%	66%	67%	58%	71%	56%	-	-	-	-	-
Perc	57	98	12	7	94	72	37	-	-	-	77	60

Traits Observed: Genomics

Statistics: Number of Herds: 0 Prog Analysed: 0



© 2024 Angus Australia

Important Notice

The information contained in this animal listing has been compiled from databases owned by Angus Australia and has been designed, created and published by Angus Australia. The information is owned by Angus Australia and has been published for information purposes only. No section or individual item may be reproduced or used by any person or other legal entity for any commercial purpose whatsoever, without the prior express consent of Angus Australia.

LOCHS T34 SVSV



Animal ID LCH22T34
NLIS Visual No/RFID - / 982 123806414645
Date of Birth 01/09/2022
Inventory Season n/a
Sex Male
Register Angus Performance Register
Mating Type AI
Colour Black
Birth Number Single
Status Active
DNA Profile Stored SNP
Parentage Verification Sire verified
Genetic Conditions AM6%,CA6%,DD6%,NH6%

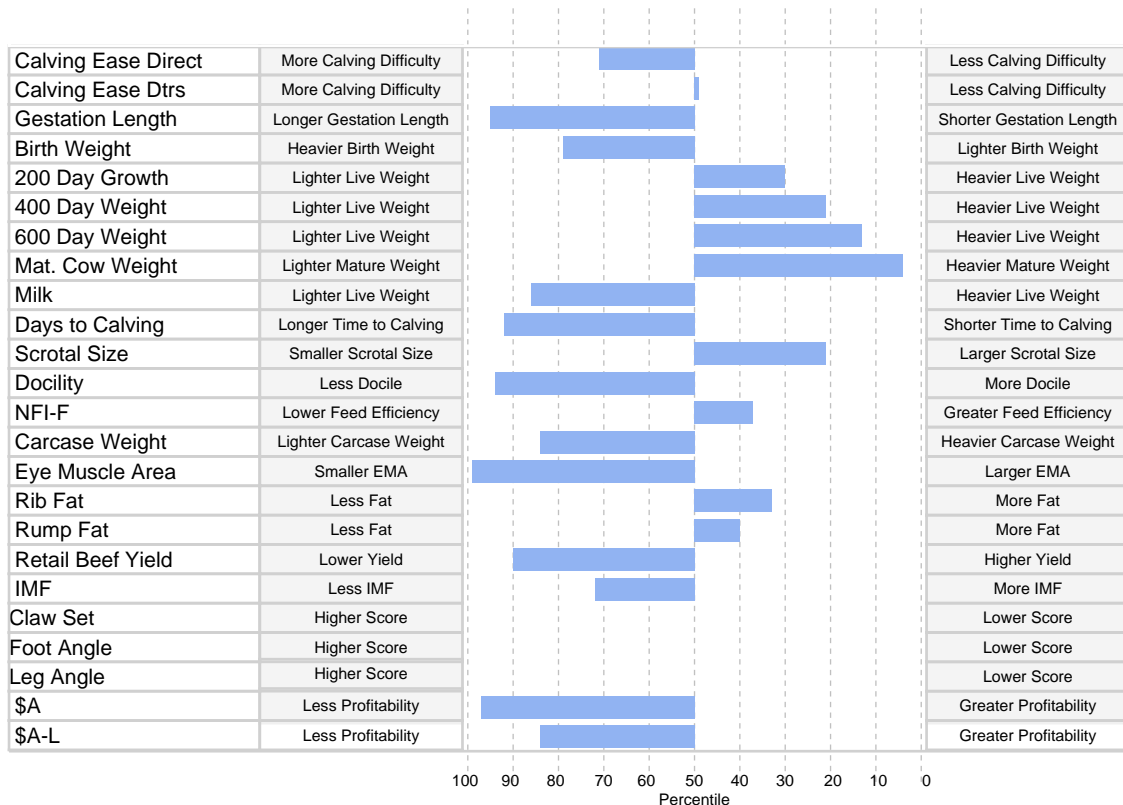
USA16207085 BENFIELD SUBSTANCE 8506#
 USA17292558 MOHNEN SUBSTANTIAL 272#
 USA16396059 MOHNEN GLYN MAWR ELBA 1758#
Sire: USA18397542 SITZ STELLAR 726D^{PV}
 USA15848422 CONNEALY FINAL PRODUCT^{PV}
 USA17776820 SITZ PRIDE 200B#
 USA17050218 SITZ PRIDE 308Y#

Dam: UNKNOWN

Mid May 2024 TransTasman Angus Cattle Evaluation												
TACE	Calving Ease				Growth					Fertility		Temp
	Calving Ease Dir	Calving Ease Dtrs	Gest. Length	Birth Wt	200 Day Growth	400 Day Weight	600 Day Weight	Mat. Cow Weight	Milk	Days to Calving	Scrotal Size	Docility
EBV	-0.3	+3.2	-0.2	+5.4	+55	+102	+139	+149	+12	-2.2	+3.0	+6
Acc	63%	48%	80%	79%	80%	78%	79%	74%	68%	35%	76%	72%
Perc	71	50	95	79	30	21	13	4	86	92	21	94
	Carcase					Feed Efficiency		Structural		Selection Index		
	Carcase Weight	EMA	Rib Fat	Rump Fat	RBV	IMF	NFI-F	Claw Set	Foot Angle	Leg Angle	\$A	\$A-L
EBV	+54	-2.7	+0.6	+0.2	-0.4	+1.4	+0.10	-	-	-	\$131	\$298
Acc	66%	65%	65%	66%	57%	70%	54%	-	-	-	-	-
Perc	84	99	33	40	90	72	37	-	-	-	97	84

Traits Observed: Genomics

Statistics: Number of Herds: 0 Prog Analysed: 0



© 2024 Angus Australia

Important Notice

The information contained in this animal listing has been compiled from databases owned by Angus Australia and has been designed, created and published by Angus Australia. The information is owned by Angus Australia and has been published for information purposes only. No section or individual item may be reproduced or used by any person or other legal entity for any commercial purpose whatsoever, without the prior express consent of Angus Australia.

LOCHS T42^{SVSV}



Animal ID LCH22T42
NLIS Visual No/RFID - / 982 123806414616
Date of Birth 01/09/2022
Inventory Season n/a
Sex Male
Register Angus Performance Register
Mating Type AI
Colour Black
Birth Number Single
Status Active
DNA Profile Stored SNP
Parentage Verification Sire verified
Genetic Conditions AM6%,CA6%,DD6%,NH6%

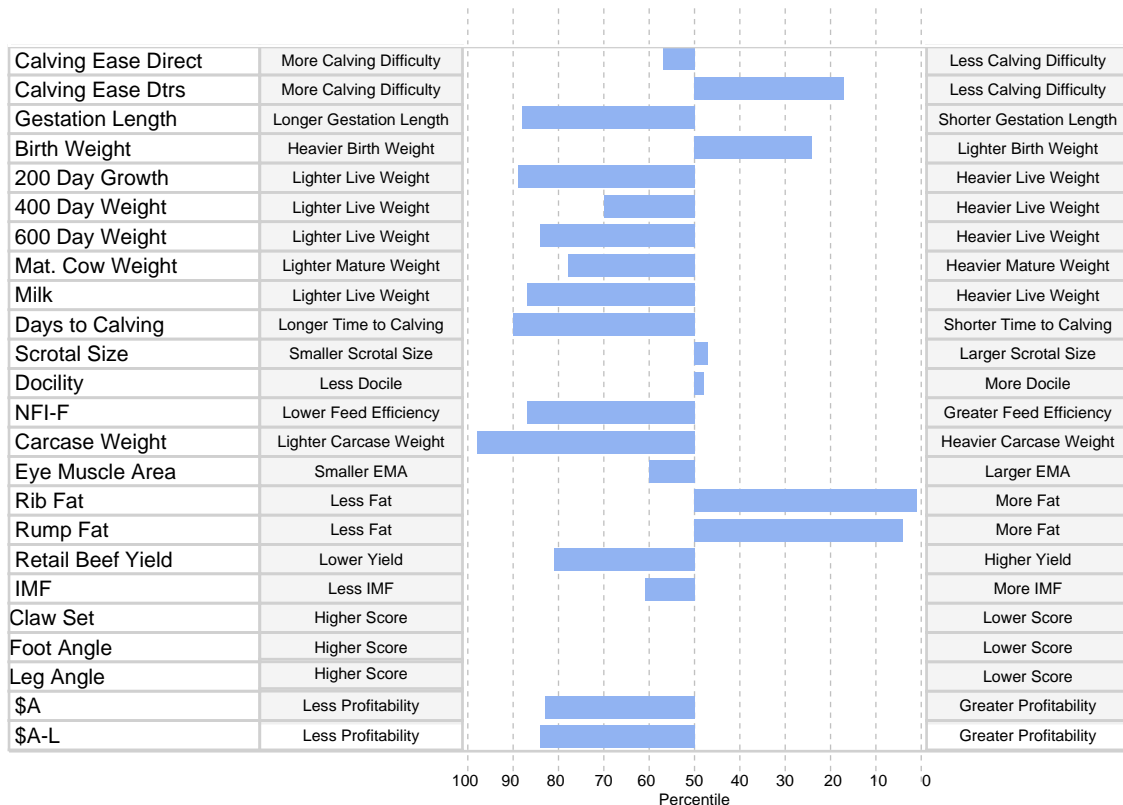
USA16207085 BENFIELD SUBSTANCE 8506#
 USA17292558 MOHNEN SUBSTANTIAL 272#
 USA16396059 MOHNEN GLYN MAWR ELBA 1758#
Sire: USA18397542 SITZ STELLAR 726D^{PV}
 USA15848422 CONNEALY FINAL PRODUCT^{PV}
 USA17776820 SITZ PRIDE 200B#
 USA17050218 SITZ PRIDE 308Y#

Dam: UNKNOWN

Mid May 2024 TransTasman Angus Cattle Evaluation												
TACE	Calving Ease				Growth					Fertility		Temp
	Calving Ease Dir	Calving Ease Dtrs	Gest. Length	Birth Wt	200 Day Growth	400 Day Weight	600 Day Weight	Mat. Cow Weight	Milk	Days to Calving	Scrotal Size	Docility
EBV	+1.5	+6.4	-1.6	+2.8	+41	+85	+101	+84	+12	-2.5	+2.2	+21
Acc	63%	49%	80%	79%	80%	78%	79%	74%	69%	35%	76%	72%
Perc	57	17	88	24	89	70	84	78	87	90	47	48
	Carcase					Feed Efficiency		Structural		Selection Index		
	Carcase Weight	EMA	Rib Fat	Rump Fat	RBV	IMF	NFI-F	Claw Set	Foot Angle	Leg Angle	\$A	\$A-L
EBV	+40	+5.5	+4.4	+3.8	-0.1	+1.8	+0.62	-	-	-	\$167	\$297
Acc	66%	66%	65%	66%	57%	70%	54%	-	-	-	-	-
Perc	98	60	1	4	81	61	87	-	-	-	83	84

Traits Observed: Genomics

Statistics: Number of Herds: 0 Prog Analysed: 0



© 2024 Angus Australia

Important Notice

The information contained in this animal listing has been compiled from databases owned by Angus Australia and has been designed, created and published by Angus Australia. The information is owned by Angus Australia and has been published for information purposes only. No section or individual item may be reproduced or used by any person or other legal entity for any commercial purpose whatsoever, without the prior express consent of Angus Australia.

LOCHS T43^{SVSV}



Animal ID LCH22T43
NLIS Visual No/RFID - / 982 123806414629
Date of Birth 01/09/2022
Inventory Season n/a
Sex Male
Register Angus Performance Register
Mating Type AI
Colour Black
Birth Number Single
Status Active
DNA Profile Stored SNP
Parentage Verification Sire verified
Genetic Conditions AM6%,CA6%,DD6%,NH6%

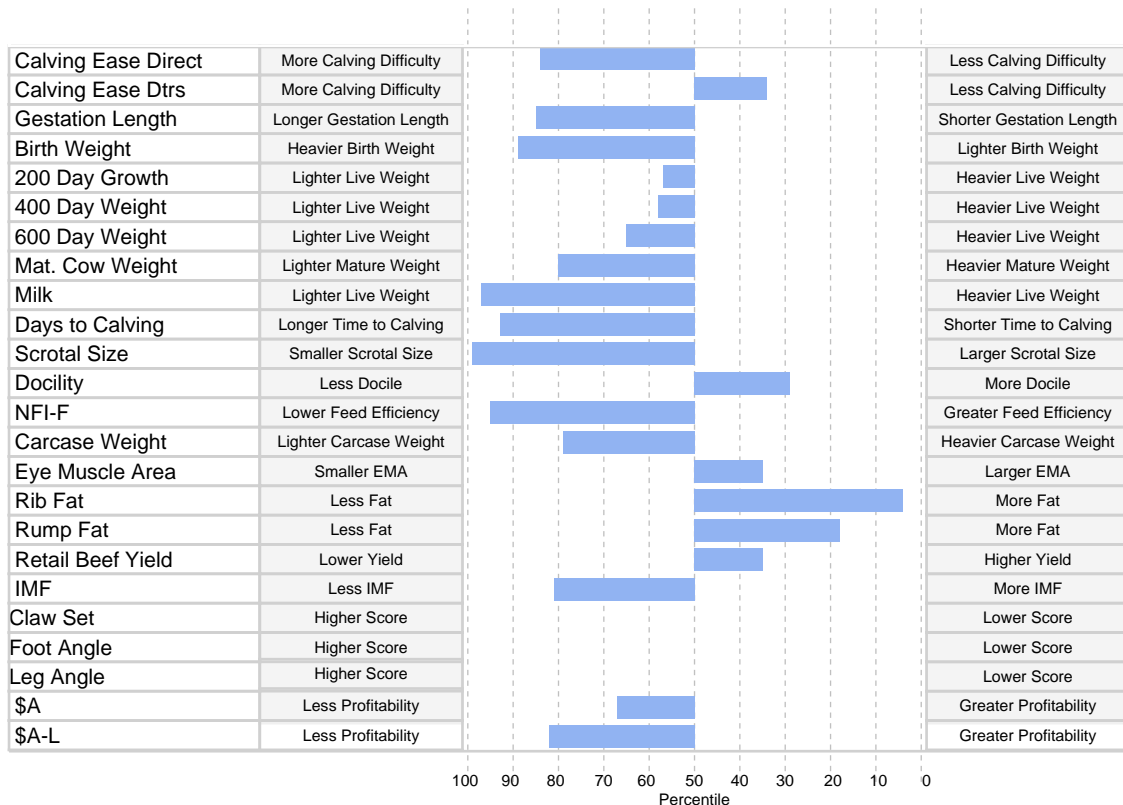
USA16207085 BENFIELD SUBSTANCE 8506#
 USA17292558 MOHNEN SUBSTANTIAL 272#
 USA16396059 MOHNEN GLYN MAWR ELBA 1758#
Sire: USA18397542 SITZ STELLAR 726D^{PV}
 USA15848422 CONNEALY FINAL PRODUCT^{PV}
 USA17776820 SITZ PRIDE 200B#
 USA17050218 SITZ PRIDE 308Y#

Dam: UNKNOWN

Mid May 2024 TransTasman Angus Cattle Evaluation												
TACE <small>TransTasman Angus Cattle Evaluation</small>	Calving Ease				Growth					Fertility		Temp
	Calving Ease Dir	Calving Ease Dtrs	Gest. Length	Birth Wt	200 Day Growth	400 Day Weight	600 Day Weight	Mat. Cow Weight	Milk	Days to Calving	Scrotal Size	Docility
EBV	-2.6	+4.6	-1.9	+6.1	+49	+90	+112	+81	+8	-2.1	-0.3	+25
Acc	64%	51%	81%	80%	82%	79%	80%	76%	71%	36%	77%	74%
Perc	84	34	85	89	57	58	65	80	97	93	99	29
	Carcase					Feed Efficiency		Structural		Selection Index		
	Carcase Weight	EMA	Rib Fat	Rump Fat	RBV	IMF	NFI-F	Claw Set	Foot Angle	Leg Angle	\$A	\$A-L
EBV	+57	+7.5	+3.3	+1.7	+0.7	+1.0	+0.84	-	-	-	\$188	\$300
Acc	67%	67%	67%	68%	58%	72%	57%	-	-	-	-	-
Perc	79	35	4	18	35	81	95	-	-	-	67	82

Traits Observed: Genomics

Statistics: Number of Herds: 0 Prog Analysed: 0



© 2024 Angus Australia

Important Notice

The information contained in this animal listing has been compiled from databases owned by Angus Australia and has been designed, created and published by Angus Australia. The information is owned by Angus Australia and has been published for information purposes only. No section or individual item may be reproduced or used by any person or other legal entity for any commercial purpose whatsoever, without the prior express consent of Angus Australia.

LOCHS T63 SVSV



Animal ID LCH22T63
NLIS Visual No/RFID - / 982 123806414644
Date of Birth 01/09/2022
Inventory Season n/a
Sex Male
Register Angus Performance Register
Mating Type AI
Colour Black
Birth Number Single
Status Active
DNA Profile Stored SNP
Parentage Verification Sire verified
Genetic Conditions AM6%,CA6%,DD6%,NH6%

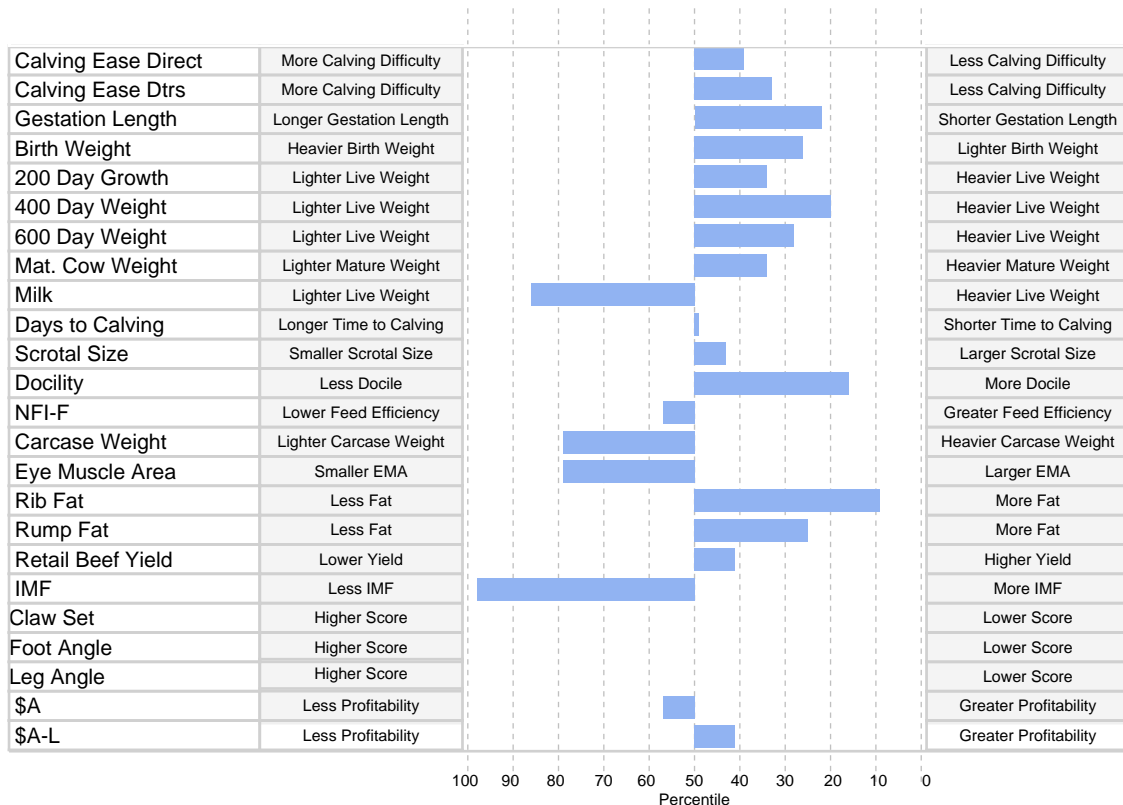
USA16207085 BENFIELD SUBSTANCE 8506#
 USA17292558 MOHNEN SUBSTANTIAL 272#
 USA16396059 MOHNEN GLYN MAWR ELBA 1758#
Sire: USA18397542 SITZ STELLAR 726D^{PV}
 USA15848422 CONNEALY FINAL PRODUCT^{PV}
 USA17776820 SITZ PRIDE 200B#
 USA17050218 SITZ PRIDE 308Y#

Dam: UNKNOWN

Mid May 2024 TransTasman Angus Cattle Evaluation												
TACE	Calving Ease				Growth					Fertility		Temp
	Calving Ease Dir	Calving Ease Dtrs	Gest. Length	Birth Wt	200 Day Growth	400 Day Weight	600 Day Weight	Mat. Cow Weight	Milk	Days to Calving	Scrotal Size	Docility
EBV	+3.5	+4.7	-6.3	+2.9	+54	+103	+130	+112	+12	-4.6	+2.3	+30
Acc	65%	51%	81%	80%	82%	80%	80%	76%	71%	37%	77%	74%
Perc	39	33	22	26	34	20	28	34	86	50	43	16
	Carcase					Feed Efficiency		Structural		Selection Index		
	Carcase Weight	EMA	Rib Fat	Rump Fat	RBV	IMF	NFI-F	Claw Set	Foot Angle	Leg Angle	\$A	\$A-L
EBV	+56	+3.8	+2.3	+1.1	+0.6	-0.5	+0.28	-	-	-	\$197	\$360
Acc	68%	67%	67%	68%	59%	72%	57%	-	-	-	-	-
Perc	79	79	9	25	41	98	57	-	-	-	57	41

Traits Observed: Genomics

Statistics: Number of Herds: 0 Prog Analysed: 0



© 2024 Angus Australia

Important Notice

The information contained in this animal listing has been compiled from databases owned by Angus Australia and has been designed, created and published by Angus Australia. The information is owned by Angus Australia and has been published for information purposes only. No section or individual item may be reproduced or used by any person or other legal entity for any commercial purpose whatsoever, without the prior express consent of Angus Australia.

LOCHS T204 SVSV



Animal ID LCH22T204
NLIS Visual No/RFID - / 982 123806414628
Date of Birth 01/09/2022
Inventory Season n/a
Sex Male
Register Angus Performance Register
Mating Type AI
Colour Black
Birth Number Single
Status Active
DNA Profile Stored SNP
Parentage Verification Sire verified
Genetic Conditions AM6%,CA6%,DD6%,NH6%

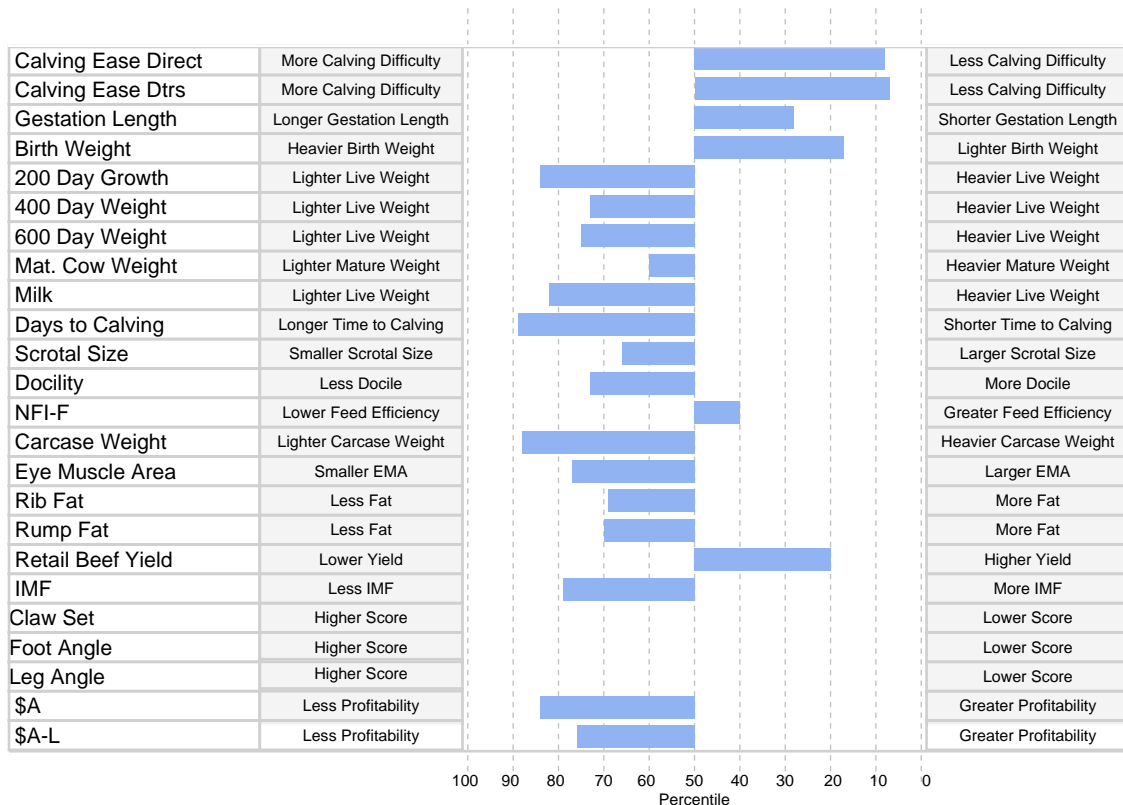
USA16207085 BENFIELD SUBSTANCE 8506#
 USA17292558 MOHNEN SUBSTANTIAL 272#
 USA16396059 MOHNEN GLYN MAWR ELBA 1758#
Sire: USA18397542 SITZ STELLAR 726D^{PV}
 USA15848422 CONNEALY FINAL PRODUCT^{PV}
 USA17776820 SITZ PRIDE 200B#
 USA17050218 SITZ PRIDE 308Y#

Dam: UNKNOWN

Mid May 2024 TransTasman Angus Cattle Evaluation												
TACE <small>TransTasman Angus Cattle Evaluation</small>	Calving Ease				Growth					Fertility		Temp
	Calving Ease Dir	Calving Ease Dtrs	Gest. Length	Birth Wt	200 Day Growth	400 Day Weight	600 Day Weight	Mat. Cow Weight	Milk	Days to Calving	Scrotal Size	Docility
EBV	+7.7	+7.9	-5.8	+2.3	+43	+84	+107	+96	+13	-2.6	+1.7	+15
Acc	63%	49%	80%	80%	81%	79%	79%	75%	69%	36%	76%	73%
Perc	8	7	28	17	84	73	75	60	82	89	66	73
	Carcase					Feed Efficiency		Structural		Selection Index		
	Carcase Weight	EMA	Rib Fat	Rump Fat	RBV	IMF	NFI-F	Claw Set	Foot Angle	Leg Angle	\$A	\$A-L
EBV	+52	+4.0	-1.0	-1.5	+1.0	+1.1	+0.13	-	-	-	\$166	\$313
Acc	66%	66%	66%	66%	57%	71%	55%	-	-	-	-	-
Perc	88	77	69	70	20	79	40	-	-	-	84	76

Traits Observed: Genomics

Statistics: Number of Herds: 0 Prog Analysed: 0



© 2024 Angus Australia

Important Notice

The information contained in this animal listing has been compiled from databases owned by Angus Australia and has been designed, created and published by Angus Australia. The information is owned by Angus Australia and has been published for information purposes only. No section or individual item may be reproduced or used by any person or other legal entity for any commercial purpose whatsoever, without the prior express consent of Angus Australia.